



TPMS

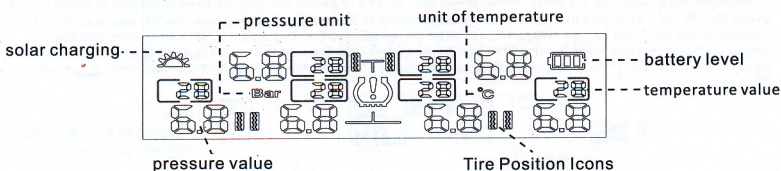
Tire pressure monitor synopsis (of a play or film)

- The monitor is turned on/off by pressing the "◀" key for 3 seconds.
- The monitor automatically turns on when it detects a car vibration in the hibernation state, and automatically hibernates after parking for more than 3 minutes.
- If the tire pressure is not abnormal, the display will update the data automatically at regular intervals; if the pressure is abnormal, the tire data will be updated instantly.

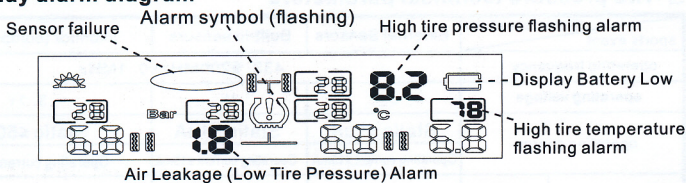
一、Tire pressure function characteristics

1. Real-time detection of tire pressure and temperature to ensure driving safety.
2. Display solar/USB dual charging.
3. Air leakage alarm, pressure and temperature overrun alarm.
4. Match the tires by adding air.
5. Display and sound double prompt alarm.
6. Tire pressure and temperature alarm standard values can be set.
7. Tire position arbitrary interchangeable function.
8. Six rounds of pressure and temperature are displayed at the same time.

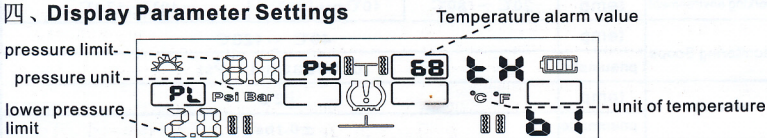
二、Display illustrations



三、Display alarm diagram



四、Display Parameter Settings



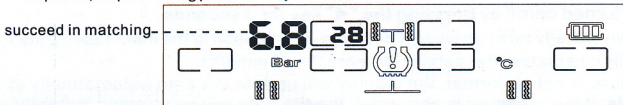
1. Into Setting Mode: Press and hold "M" key for 3 seconds to enter the setting mode with a buzzer BI, short press "M" key to select between Bar/Psi→Temperature Unit °C/F→Pressure Upper Limit PH→Pressure Lower Limit PL→Temperature Upper Limit TH in a cycle, and press "◀" or "▶" key to adjust the parameters, long press "M" key for 3 seconds to save and exit (long press "▶" key for 3 seconds to save and exit). Press "◀" or "▶" key to adjust the parameters, long press "M" key for 3 seconds to save and exit (long press "◀" key for 3 seconds without saving and exit). Press "M" key for 3 seconds to save and exit (press "◀" key for 3 seconds without saving and exit).
2. Pressure Unit Setting: In Bar/Psi setting state, Bar or Psi is blinking, press "◀" or "▶" to select the pressure unit, long press "M" key to save and exit. (Factory default value is Bar).
3. Temperature Unit Setting: In °C/F setting state, °C or F blinks, press "◀" or "▶" to select the temperature unit, and long press "M" to save and exit (factory default value is °C).
4. Upper Pressure Setting: In PH setting state, the upper pressure limit value is blinking, press "◀" or "▶" to adjust the pressure value, long press "M" key for 3 seconds to save and exit (Adjustable range: 1.0~9.9Bar, factory default is 8.0Bar).
5. Lower Pressure Limit Setting: In PL setting state, the lower pressure limit value is blinking, press "◀" or "▶" to adjust the pressure value, long press "M" key for 3 seconds to save and exit (Adjustable range: 0.9~9.8Bar, factory default is 2.0Bar).
6. Upper Temperature Setting: In TH setting state, the upper temperature value is blinking, press "◀" or "▶" to adjust the temperature value, long press "M" key for 3 seconds to save and exit (Adjustable range: 50~93°C, factory default is 68°C).

五、Sensor-Display Pairing

1. Into pairing mode: Press "▶" key continuously for 8 times, the buzzer BI one time to enter pairing mode, the left front wheel flashes, the display interface is as follows



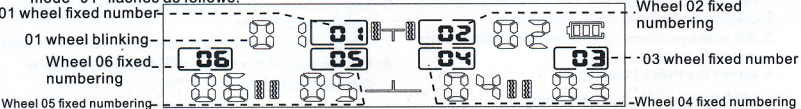
2. Tire Matching: After entering the pairing mode, short press "▶" button to select the tire to be paired, at this time the tire to be paired with air or screw the sensor to the air nozzle, the display receives the signal "----" will become the pressure value, indicating that the tire pairing success, press "▶" to select the next tire to be paired, all paired and long press "M" button to save and exit. Successful, press "▶" to select the next tire to be paired, all paired long press "M" key to save and exit.



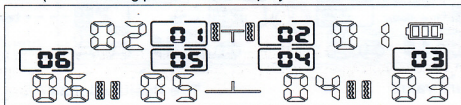
Note:
Long press the "◀" button.
Exit without saving

六、Tire interchangeability

1. Into the tire swap mode: continuously press the "M" key 10 times buzzer BI a sound into the tire swap mode "01" flashes as follows.



2. Swap tires: After entering the swap mode, press the "M" key to select the first tire to be swapped to make it blink, press the "▶" key to adjust the number of the second tire to be swapped, then press the "M" key to confirm the number of the two tires can be swapped over after the swap, and finally press the "M" key to save and exit. " key to confirm the swap after the two tires can be swapped over the number, and finally long press "M" key to save and exit can be. (The following picture is the display of the left front wheel and the right front wheel after the swap)

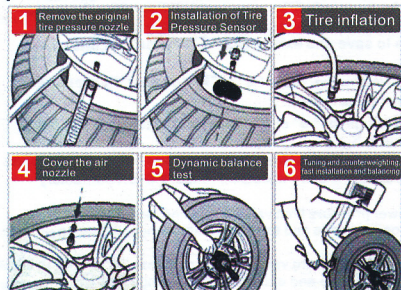


Note:
Long press the "◀" button.
Exit without saving

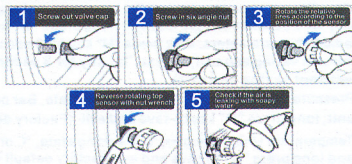
七、Tire pressure technical parameters

character radical		External Sensors	Built-in sensors	monitor (computer)
sports event				
operating frequency		433. 9200MHz±0. 1MHz		
operating voltage		3V	3V	3. 7V
operating charge		Static ≤1uA	Static ≤1uA	Static ≤50uA
		Operating current ≤15mA	Operating current ≤15mA	Operating current ≤5mA
working environment	temp	-20℃ ~+80℃	-40℃ ~+120℃	-40℃ ~+70℃
Monitoring Scope	temp	-40℃ ~+120℃		
	pneumatic	0-9.9Bar/0-144Psi		
accurate	temp	±2℃		
	pneumatic	±0.1bar		

Built-in sensor installation procedure:



External Sensor Installation Procedure



External Sensor Battery Replacement Procedure

