

Truck tire pressure monitoring system

|Operating instructions|

Important note: Please read the instruction manual carefully before use. Non-special beads are not recommended to change the machine parameters. The illustrations in this manual are for reference only.

1、Product Overview

Thank you for purchasing our tire pressure monitoring system Tire Pressure Monitoring System (TPMS). This system is designed to provide you with an extra layer of protection while driving, and it will alert the tire condition of the car in advance.

With TPMS installed, the system can monitor tire pressure and temperature conditions in real time. If any abnormal tire pressure and temperature is detected, the system will send a real-time warning sound and bright screen flashing icon to inform the driver. Real-time reminders and handling problems can prevent traffic accidents and ensure the safety of drivers and passengers.

The wireless tire pressure monitoring system requires the correct installation method and the installation of the system by qualified operators in accordance with the steps of the installation manual, so that the system can operate correctly and provide a warranty. Those who damage the sensor due to improper installation or disassembly will no longer enjoy the product warranty.

2、Introduction of receiving host

1.Interface / display description



1. Left button
2. Set key
3. Right button
4. Solar energy
5. temperature unit
6. Tire pressure
7. bar&psi
8. temperature
9. Battery

2. Tire order



3.Key function description

- USB charging port / receiver charging interface
- Left button / Left switch menu (In standby mode, short press to adjust brightness, long press to turn on / off)
- Set key / confirm key / power-on key (standby state, short press to display temperature, long press to enter menu mode)
- Right button / right switch menu (in standby mode, short press to adjust brightness, long press to turn off alarm)

3、The function settings (different model interface will be different)

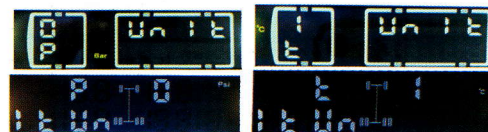
Users can set the parameters according to their own vehicle conditions or actual needs. If there is no setting modification, the system defaults to the factory state; long press the "Menu key" for 3 seconds to enter the system setting state, except that the pairing operation interface is 90 seconds long. , If there is no operation in other interface within 30 seconds, the system will automatically exit to the main interface state, and the settings without confirmation will not be saved. (Regardless of which parameter is set, press and hold the "Menu key" to return to the main interface after setting)

1. Air pressure unit setting (factory default is bar)

In the standby state, press and hold the "Setting key" for 3 seconds to enter the system setting state. The 0 icon appears in the upper left corner. Press the "Setting key", then press the left and right keys to switch between bar and psi.

2. Temperature unit setting (factory default is °C)

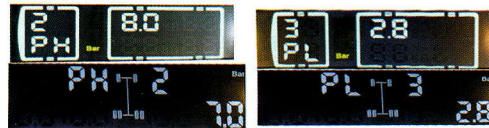
In the standby state, press and hold the "Setting key" for 3 seconds to enter the system setting state. Press the right button once, the 1 icon appears in the upper left corner, click the "Setting key", and then press the left and right buttons to switch the temperature unit. After switching, press the middle button confirm.



3. Change the upper and lower limits of the tire pressure value (the factory default value varies with different models)

In standby mode, press and hold the "Setting key" for 3 seconds to enter the system setting state. Press the right key twice, the 2 icon appears in the upper left corner, press the "Setting key", and then press the left and right keys to change the upper limit of the air pressure alarm. Press to confirm.

In the standby state, press and hold the "Setting key" for 3 seconds to enter the system setting state. Press the right button three times and the 3 icon appears in the upper left corner. Press to confirm.



4. Temperature upper limit setting

In the standby state, press and hold the "Setting key" for 3 seconds to enter the system setting state. Press the right button four times, the 4 icon appears in the upper left corner, press the "Setting key", and then press the left and right buttons to change the upper limit of the temperature alarm. Press to confirm.



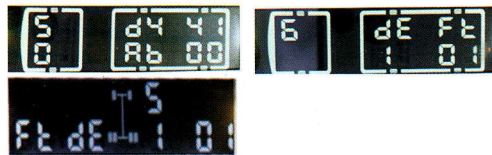
5. Replace the sensor

First remove the sensor that needs to be replaced. In the power-on state, press and hold the set button for 3 seconds to enter the setting,

then press the left button twice to enter the 5th item, press the set button, wait for the 0 below to flash, and press the left and right keys. Select the position that needs to be replaced, and then press the middle button once to make the other number blink. Install the sensor to be replaced on the valve. If the blinking number stops, the update is successful. In any setting state, press and hold the middle button to exit the setting. In the fifth state, any sensor can be assigned to any position, and it can be replaced without replacing the original position.

6. Restore factory settings

In the standby mode, press and hold the "Setting key" for 3 seconds to enter the system setting state. Press the left button once, the 6 icon appears in the upper left corner, and then press the "Setting button" twice. Will return to the factory state). The sensor that needs to be replaced can be removed first, replaced with a new sensor, and then restored to factory settings. The machine will automatically update the sensor (requires 5-10 minutes driving)



7. Factory parameters

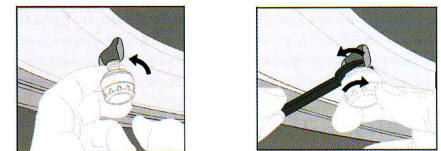
AN-07A	Upper air pressure	8.0 bar	Lower pressure limit	2.8bar	Upper temperature limit	75°
AN-07C	Upper air pressure	15.0 bar	Lower pressure limit	2.8bar	Upper temperature limit	75°

Installation Notes External sensor installation



a. Screw in the anti-theft nut first

b. tighten the sensor



c. Screw the anti-theft nut counter-clockwise against the sensor

d. Tighten the sensor and tighten the anti-theft nut counter-clockwise with a wrench

When replacing the battery with the sensor, please disassemble one by one, install the outer casing, do not mix or disassemble and install at the same time;

It can effectively prevent the sensor from being misplaced and installed in other tire positions due to misassembly of the housing. When the receiver prompts "The sensor is low", and the display shows a LO flashing warning.

Please replace the sensor battery on the corresponding tire in time. (Lithium battery CR1632, working temperature requirement -30 °C ~ 80 °C); users can purchase from product vendors.

1. Before removing the sensor, please prepare the nut wrench, rotate the nut clockwise to separate the nut and the sensor, and then remove the sensor counterclockwise;
2. Remove the anti-seizure ring and use a wrench to unscrew the sensor cover case counterclockwise.
3. Remove the old battery from the battery holder and do a good job in environmental protection classification;
4. distinguish the positive and negative position (positive "+" upwards); install a new battery CR1632;
5. Screw on the top cover of the sensor cover and tighten it clockwise with a wrench.



A Select sensor



B Remove the tamper ring



C Unscrew the top cover with a wrench



D Put in a new battery
Tighten the top cover
Install the tire to the nozzle
Built-in sensor installation